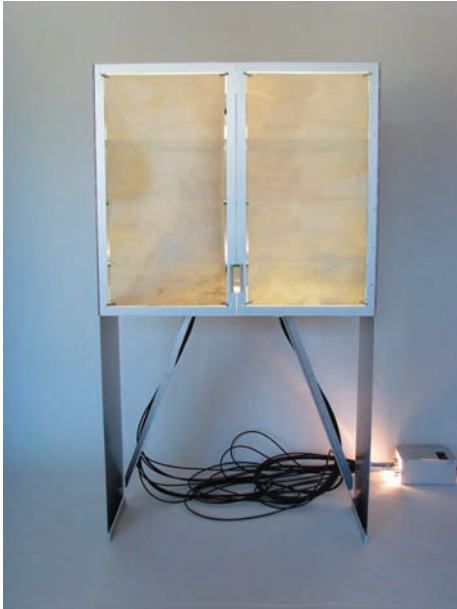




ARCTIC
Light of the North

by JohanLinton
for KÄLLEMO



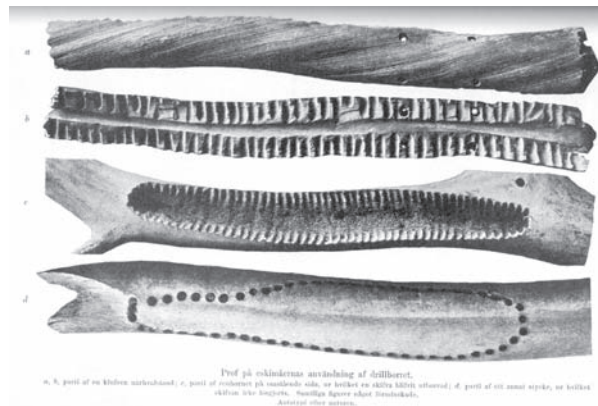
ARCTIC by Johan Linton
Cabinet in anodized aluminium, doors with parchment, fiberoptics, bone
Height 160 cm, width 90 cm, depth 33 cm
Limited edition

Johan Linton's grandfather's grandfather was the explorer and paleobotanist, professor Alfred Gabriel Nathorst – who led an expedition in the Polar sea in the summer of 1898 and 1899 – and who surveyed unknown land in the Arctic.

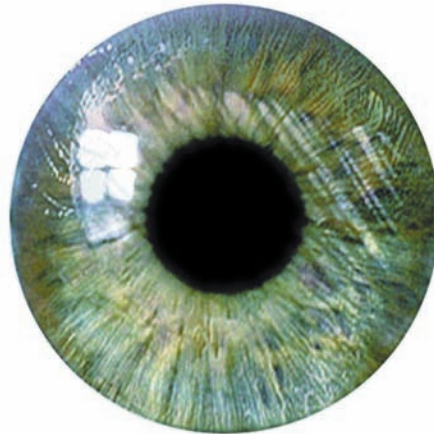
In relation to the sunlight and the landscape the most pure and strong image of the North that appeared to Johan Linton was the Arctic. He began to study Eskimo design techniques and tried to find materials reflecting his sentiment for the large enigmatic land of ice and snow in the far North. He found Eskimo design very pragmatic, direct and open to new and unexpected influences in the pursuit to reach a certain purpose.

For the structure he chose anodized aluminium, a simple, hard material from the modern world that could be seen as corresponding replacement for materials as bone or driftwood. To filter the light and cover the interior to the skin and intestine used by the Eskimos, and associated with the transfer of human civilization through time

The way Johan Linton approach the design process is deeply personal. He has formerly made objects for Källemo that were characterized by his interest for the Latin; a recliner inspired by the Italian baroque painter Caravaggio; an easy chair as homage to the French philosopher Jacques Derrida; different chairs translating the mood in the film Jour de fête by the French director Jacques Tati. In time when the designworld oftenest talks about the trend of the season this has a relieving effect and reflect Källemos deep engagement in the immaterial qualities of furniture.



KÄLLEMO



"it shall stand the wear of the eye"

Sven Lundh

KÄLLEMO AB box 605 331 26 Värnamo Sweden
tel +46 370 150 00 fax +46 370 150 60 info@kallemo.se www.kallemo.se